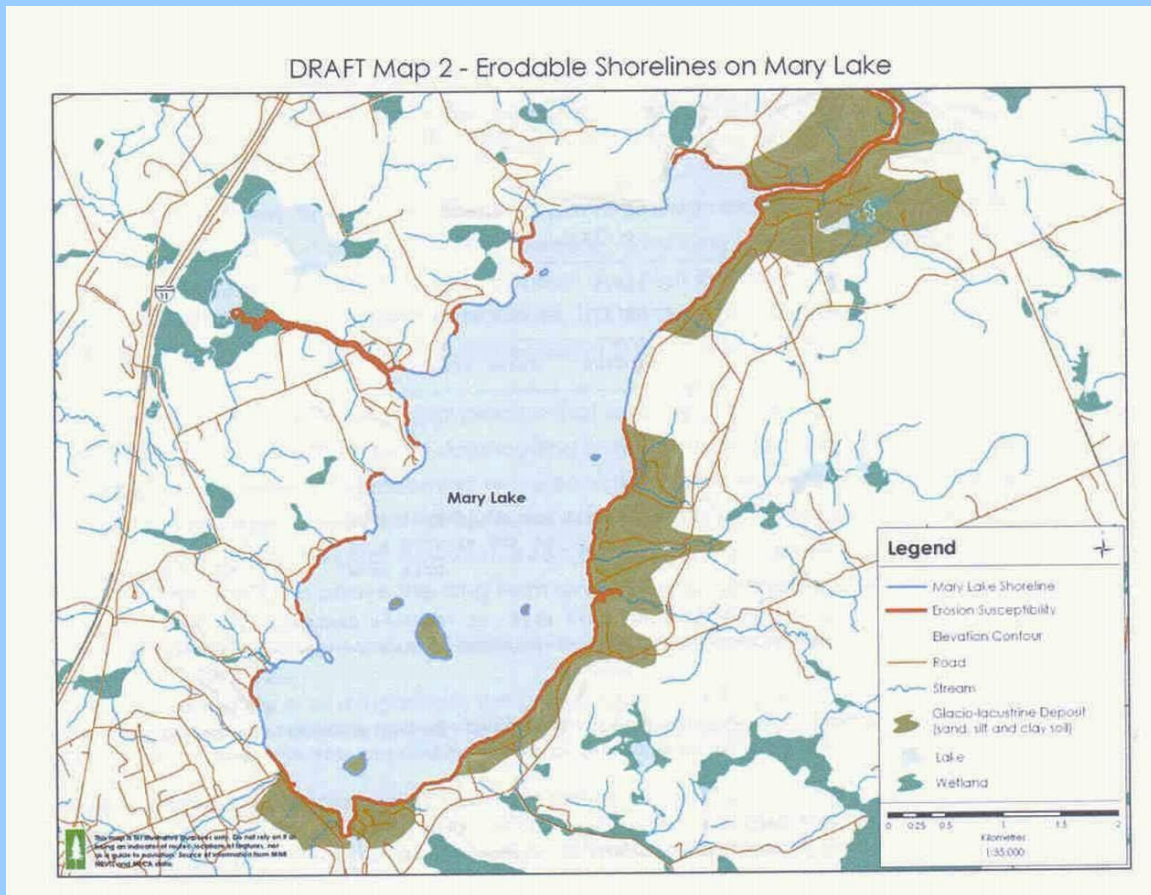


Watch your Wake

We have a real problem on Mary Lake with operators of boats who don't understand what damage their wakes are doing to our shorelines. The present 30 metres from shore restriction is generally adequate to allow a boat wake sufficient time and distance to dissipate. Thirty metres is completely inadequate for the large disturbance caused by a wake boat or by boats travelling at transition speeds just below planing.

Travel Well Offshore Away From Sensitive Shorelines



Brown areas are glacial soils that are easily eroded

The Mary Lake Association
www.marylakeassociation.org